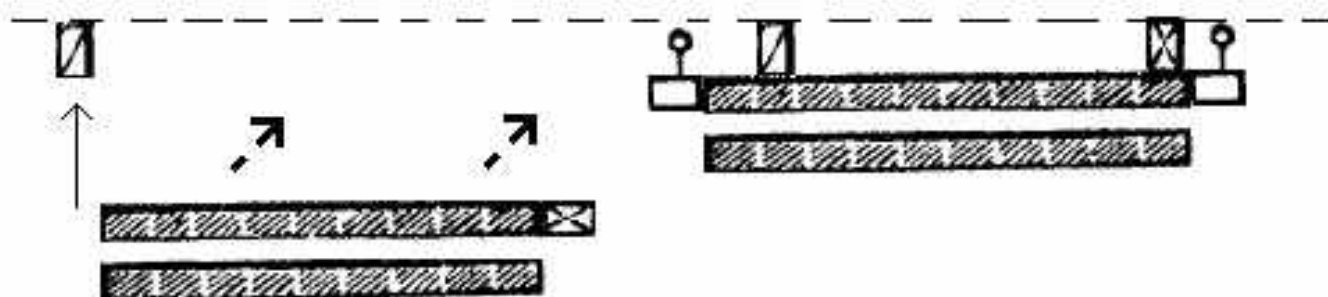
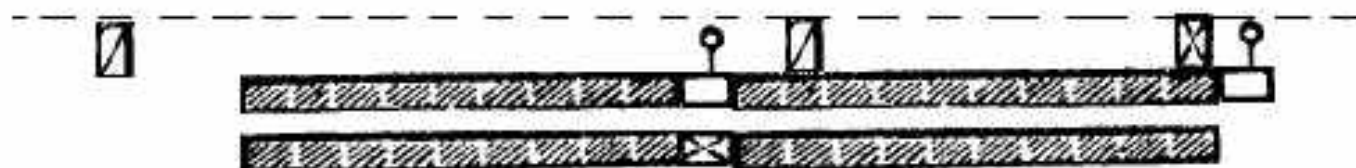


## *THE WORTHLESS SECOND SERGEANT.*



At halt, 2d Sgt wrongfully goes straight, then dresses on line of markers.



Being out of position, the line is forced to dress without use of its marker causing the line to dress in an uneven manner.



Realizing his error, the 2d Sergeant shifts to the left of his company and conforms with the line instead of the line conforming to him. Often, the sergeant will halt at the end of his company instead of his proper post as is shown in the 2d sergeant of the right company.



The 2d Sergeant should have gone to this location guessing where the chest of the third man from the left would halt. No error occurs if the final location is the chest of the second or fourth man.